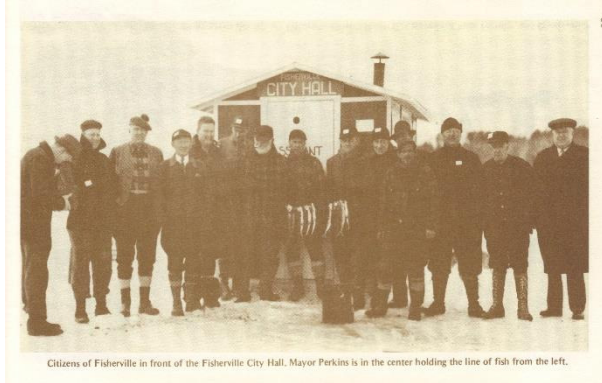


Fisherville

2015-2016
Wolfeboro Bay, NH



November 16, 2015
Nolan's Bistro 6 pm

Next Meeting: Mon. Nov. 23 6 pm
Nolan's Bistro

In Attendance:

Tom Wachsmuth., Caroline Nolan., Paul Green, Lucy Van Cleve, Linda Murray

- **Review last meeting minutes:** Approved
- **Bank Account Update:** Signed paperwork! We are good to go! We can deposit all our money in an account.
- **T-Shirts/ Sweatshirts Sales:** Table set up by Spencer Hughes before the parade. Should have it set and ready by 2 pm. Will confirm time with Mary. Chamber has a table for us to use. We will have T-Shirts for sale and have the Winter Wonderland Passport available.
- **Events for 2016 Season:** Wolfeboro's Chili/ Chowder Fest on Feb. 20th – More details to come. Wolfeboro Fishing contest March 4-6.
- **Get community involved:** wonderful Support from the community!!! Businesses involved:
 - Wolfes Tavern – In parade
 - Nolan's bistro – in Parade
 - Blacks –
 - Straw Cellar
 - Wolfeboro Trolley
 - Dive Winnepesaukee
 - Goodhue and Hawkins
 - Capelli's Hair Salon
 - Wolfeboro Chamber
 - Cottage Surroundings
 - Hole in the Wall
- **Discussion:** Lots of talk on Land to lake access and snowmobile trail through town.
- **Next meeting:** Mon. Nov. 23rd. 6 pm

Lucy Van Cleve